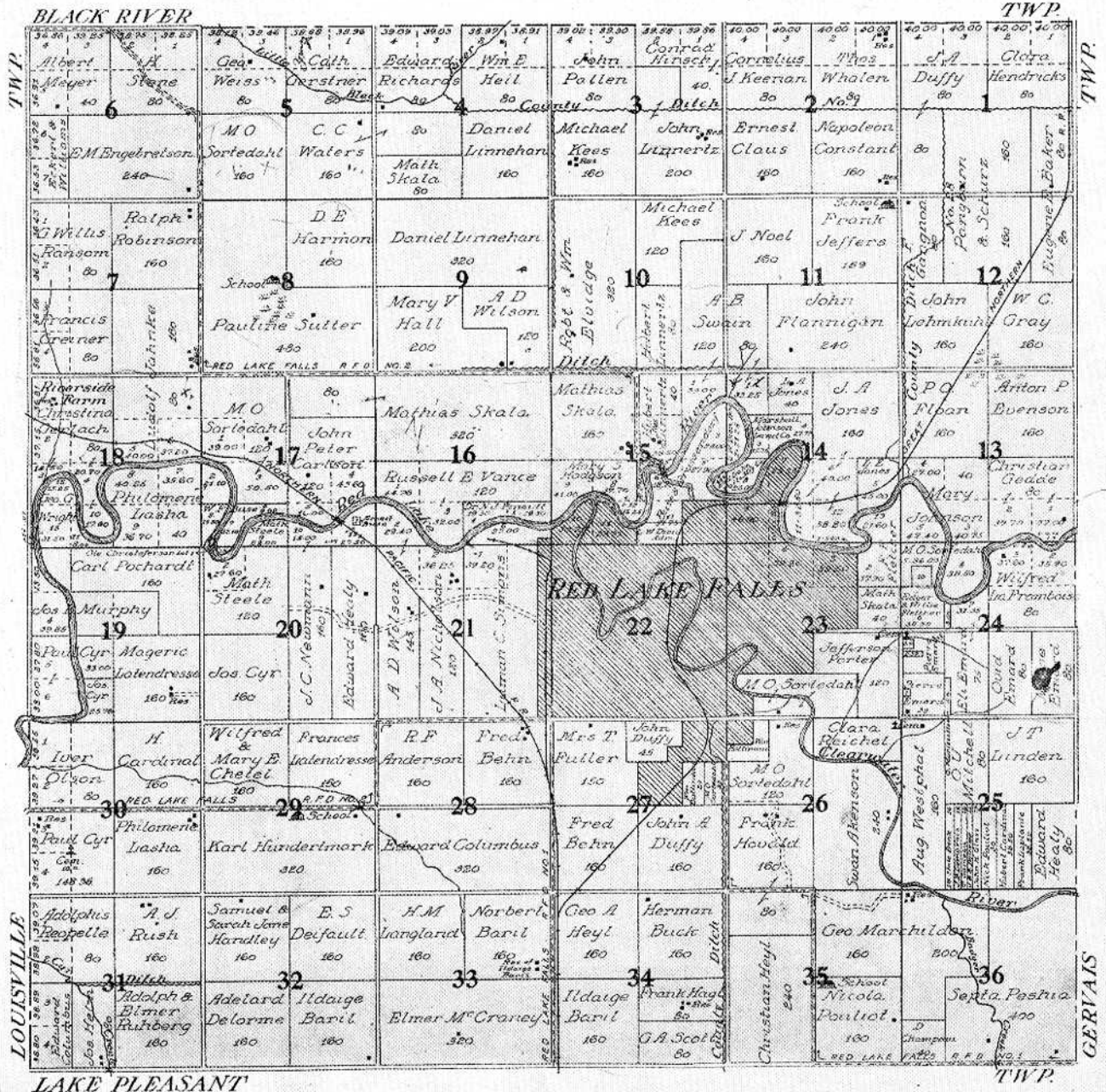


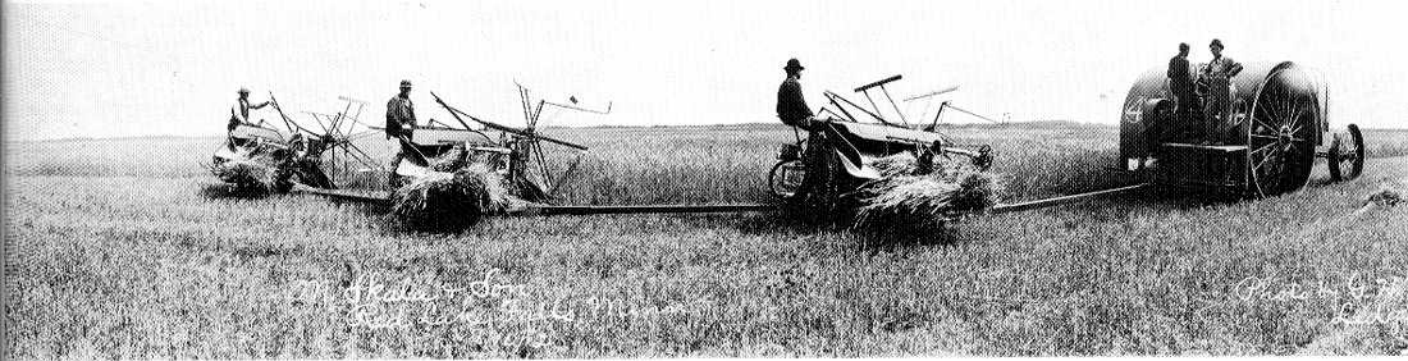

  
**MAP OF**  
**TOWNSHIP 151 N., RANGE 44 W.**  
 of the 5th P. M.  
 Scale 1 1/2 inches to 1 mile

**RED LAKE FALLS TOWNSHIP**



LAKE PLEASANT

T.W.P.



Matt Skala's big gasoline tractor (Big Four) purchased in May of 1912, was equipped to pull six breaking or eight stubble plows. Joe Skala was the driver with Richard Adler, John Johanneck and John Hirsch on binders.

# RED LAKE FALLS TOWNSHIP

The first recorded meeting of this township was held October 10, 1879 for the purpose of recording two highways in the township. The township was then located in Polk County. The officers were W. W. Wilson, chairman; L. W. Gervais, Clerk; Isaiah Gervais and Peter Bottineau, supervisors. Obviously there must have been at least one meeting previously to elect these officers, but there is no record of it.

At an annual meeting held April 13, 1880, W. W. Wilson was re-elected chairman, Henry Gervais and Eli Lasha were elected supervisors, and Frank Hunt was elected clerk.

At a meeting held October 22, 1880, all section lines in the township were declared public highways, except 18/19, 17/20, 16/21, 15/22, 14/20, and 13/24.

On March 8, 1881, Thomas Belair was elected chairman, L. H. Gervais, clerk, and Eli Lasha and George Brunelle supervisors. A three-mill tax was appropriated for road purposes, and two mills for town purposes. Town officers received two dollars a day as salary. A previous poll tax was two days' labor. A man and a team of horses were paid three dollars a day, land labor one dollar fifty cents a day, and a man and a yoke of oxen were allowed two dollars for a ten-hour day.

At the election of March 14, 1882,

Thomas Belair was again elected chairman, with R. N. Borden, clerk, and John Dwyer and Henry Gervais supervisors. Action was taken providing that township notices be posted at the state road crossing of the Red Lake River, at Eli Lasha's place in section 30, and at the George Brunelle place in section 27.

At the March 11, 1884, meeting bids were let for the construction of a bridge between Red Lake Falls and Lake Pleasant townships. Thomas Belair was the low bidder, with a price of \$195. An application for township aid in the amount of \$4,000 by the Duluth and Manitoba Railroad is recorded for the construction of a railroad from a point in Becker County to the village of Red Lake Falls. The application was signed June 4, 1884 at St. Paul by James B. Holmes, president, and Ernest Buse, secretary for the Duluth-Manitoba Railroad Company, and the corporate seal was attached. On April 10, 1886, records show that bonds were filed in aid of the Duluth Manitoba Railroad in the amount of \$4,000, maturing in thirty years, and bearing interest of 6% per annum. A true and correct copy was sent to the office of the State Auditor of the State of Minnesota, signed by George LaBissioniere, clerk.

Action was taken to permit cattle to run at large from November 1 to May 1 at a

meeting held March 10, 1885.

Edward J. Schmitz, township clerk for twenty-three years, has some interesting comments on the recorded history. Entries made in 1888 suggest that many people had difficulty paying their taxes, although they ranged only from twelve cents to a high of six dollars eighty-two cents for the year. Mr. Schmitz says that Ildaige Baril served as clerk for the longest period, more than forty years, beginning March 10, 1881. Other clerks were L. W. Gervais, Frank Hunt, R. N. Borden, George LaBissioniere, Simon Paul, Francis LaBissioniere, Henry Grenier, Edward J. Schmitz, and Ed H. Schmitz.

Serving as treasurer over the years were Eli Lasha, Pierre Emard, Simon Sutter, John Linnertz, Sr., Jacob Linnertz, Harry Miller, George Schafer, John Schafer, and Jorgen Knutson.

Supervisors include the following: W. W. Wilson, Isaiah Gervais, Peter Bottineau, Henry Gervais, Eli Lasha, Thomas Belair, George Brunelle, John Dwyer, Joseph Belair, Jos. Marchildon, Pierre Emard, Francis LaBissioniere, Horace Gervais, George Marchand, Paul Cyr, Peter Mercier, Jeff Porter, John Marleau, Carl Gerlach, John Alsted, Mike Kees, Karl Hundedmark, John Flannagan, Thomas Whalen, George Nelson, E. S. Dufault, Anton Zins, Ferdinand Jahnke, John Kuld, Frank Musil, Fred Seeger, Clifford Longtin, Harvey Knott, Arnold Miller, Earl W. Kirschman, Robert Hance, Donald Lykken, Clarence Vatthauer, Emmet Olson, and Carl Harmoning.

The beautiful handwriting of some of the earlier clerks contrasts with the inability of some of the other officers even to sign their names. In several cases they signed with a +.

The first certificate of wolf bounty was issued to Arthur Demers May 2, 1900, and the practice continued into the twenties.

Meetings have been held in such places as the Central House, in Red Lake Falls, N. Pouliot Hotel, Montreal Hotel. "In the late 1800's," says Mr. Schmitz, "and even in my time, it was a practice to post township notices of importance to the residents of the township at three prominent places. In 1899 it was ordered by the board to post one notice at the post office in the village of Red Lake Falls, one at the Red Lake River bridge, and one on the telegraph post on the northeast corner of the Paul Berthon farm. That practice seems to have been discontinued, although I posted such notices during my earlier terms."



A Sunday afternoon gathering of Emmanuel Church members at the Carl Gerlach farm.



Mr. Schmitz notes another duty of the township clerk was discontinued during the 1950's. Recording of births and deaths was transferred to the Clerk of Court for the County.

On March 2, 1953, a special township meeting voted to purchase fire-fighting equipment, to be operated by the City of Red Lake Falls firemen, since the city fire trucks were not permitted to answer calls outside the city limits.

The present board of Red Lake Falls Township includes Clarence Vathauer as chairman; Cal Harmoning and O. E. Olson as supervisors; Edward H. Schmitz, Jr. as clerk and Jorgen Knutson, treasurer.

## OLD BUSY BEE SCHOOL DISTRICT # 167

Old Busy Bee School, District #167, was located in the NE quarter of section eleven in Red Lake Falls Township. Early records found at the court house indicate the existence of another school in this same area in 1882-83, however, these records tell little else. Information dated 1897 shows John Marleau, John Dwyer and George Weiss on the school board.

Some of the earliest teachers at Busy Bee were Clara Richard, Anna Rosch, Marie Crompe, Edith Hanson, Nita Adler Nieland, Irene Schusser Zins, Alice Baker, Cecilia Hart, Gertrude Blaska, Blanche Berthiaume, Ursula Patnode Jolly, Opal Cornell, Anna Pinnsonneault Proulx, Agnes Johanneck, Freda Lehmkuhl, Elizabeth Kruse, Mary Jo Carmody, Marcella Platt Fernholz, Rita Westerman, Eunice Lambert Haupt, Leonard St. Mitchel, Ula Guillemette, Frances Marleau, Evelyn Longtin, Lucille Schmitz Desotel, Thelma Dailey and Musetta Normandeau.

### "Memories of Busy Bee"

In the winter months it became the responsibility of every student to keep the entry-way filled with wood for the heating stove. At recess time, this became the first order of business with the eighth grade students acting as bosses and the younger students anxious for their turn to give orders. The huge stove with its heating jacket was a very important part of the school room. It was here that the students crowded together, toasting one side and then the other on cold winter mornings. Its warmth provided a place to dry mittens, thaw lunches, bake potatoes and heat soup that was brought from home. On one occasion (a nice sunny day) a few of the boys filled the stove to the top with wood when the teacher was out of the room. This created such a roaring fire that we all had to wait outside to see if the stove would explode! The result of this prank for the boys was a visit from and lecture by the school board — A disgrace in those days!

We were delighted when during the courtship of one of our teachers, Ida Longtin, her suitor, John Kees, came to call during school hours. It meant missing a few classes when she would talk with him in the entry-way! Of course, we never dared to tease her as that would have been disrespectful! Another teacher whose gentleman friend came to call just as school was dismissed for the day, found the tires on his model T Ford without air at the end of his visit! Another Prank!

Sometimes, even on the coldest days, the teacher would interrupt classes to have us dash outside for a quick run around the building. This would perk us up and air us out after sitting for a long while in the small and often crowded classroom.

The most special occasions, of course, were the Christmas programs and the end of the year picnics.

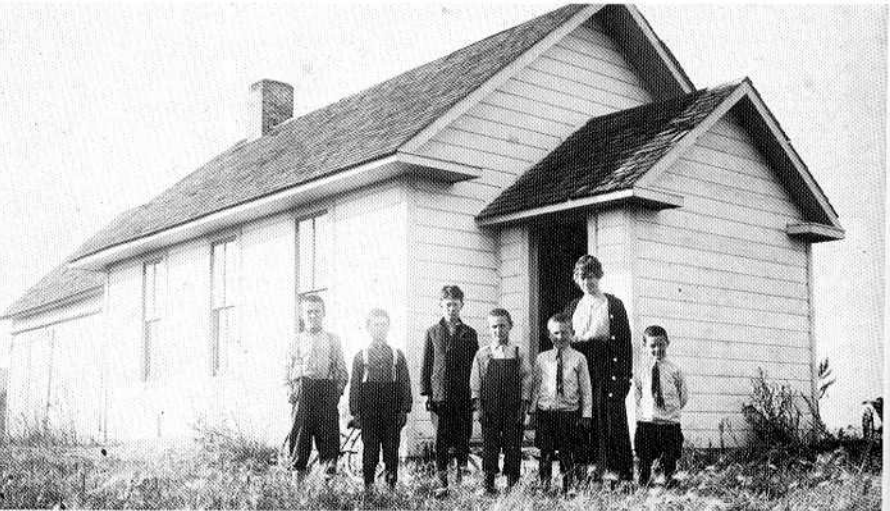
We had a good, well-rounded education at Busy Bee School, provided by very competent teachers.

The school house stood empty for some years following consolidation and was eventually purchased by Ed Schmitz, Sr. and moved to his farm.

Contributed by Mary Whalen Drees



District 167 Busy Bee School. Anna Linnertz, Neta Adler, (teacher), Theresa Hirsch, Leland Olson, Florence Kees, Louise Linnertz, three Rolf girls, Cecilia May, Mildred Gale, Annie and Josephine Linnertz, Gertrude Hirsch.



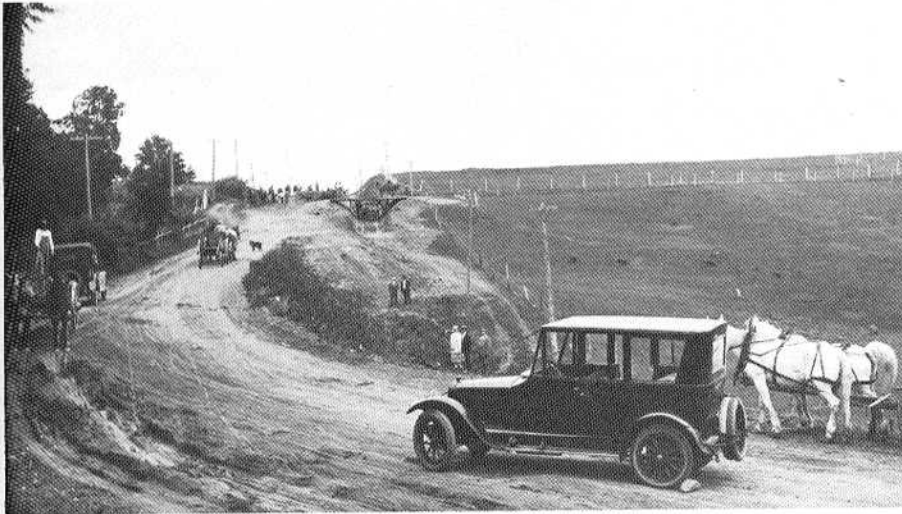
School District 40 located on the Karl Hundredmark farm in Section 29. Francis Keifenheim was the teacher 1914. Cyr and Miller families.



Log jam on the Red Lake River 1911 near Bache farm.



Repairing the Skala hill north of Red Lake Falls, the old Jefferson Highway about 1915. Zaiser Bros. were the contractors.



Timberlane Ski Area northwest of Red Lake Falls developed in 1958 on the banks of the Red Lake River, Red Lake Falls township.